



20.01.2025

KATOWICE

***THEORY OF GEOMAGNETIC DEEP FIELD
INTERFERENCE CAUSED BY
ANTARCTIC ICE AND ARCTIC WATER STRONG
MAGNETIC INTERFERENCE PROPERTIES
RESULTING IN GLOBAL GEOPHYSICAL CLIMATE CATASTROPHIES AND
GENBIOLOGICAL HEALTH DEATHS AROUND THE WORLD.***

THE THEORY IS WRITTEN IN HOPE FOR THE SPONSORSHIP OF A GEOMAGNETIC RESEARCH EXPEDITION IN TO THE ARCTIC AND ANTARCTIC POLAR REGIONS TO DETERMINE THE POSSIBILITY OF A CLIMATE REPAIR BY A REMOVAL OF 200,000 KM² OF ANTARCTIC ICE SHEETS IF IT'S DETERMINED BY THE RESULTS OF DRILLING REQUIRING SPONSORSHIP THAT MAGNETIC FIELD STRENGHT UNDER THE ANTARCTIC IS FULLY CAPABLE TO REVERSE GLOBAL CLIMATE CATASTROPHIES AND CLIMATE BASED HEALTH DEATHS.



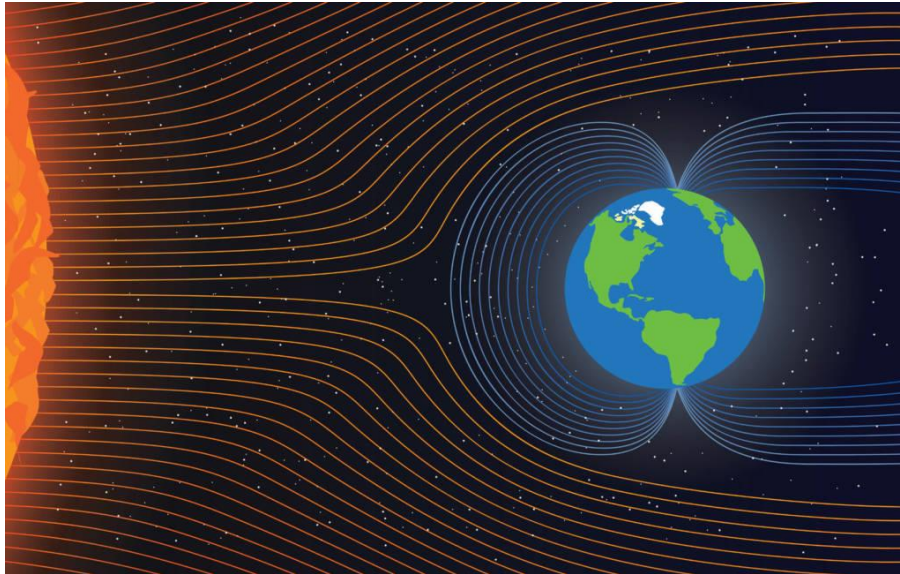
I am approaching you with a theory and opportunity to sponsor a very special type of research that has never been done before. The climate of the entire planet depends on the magnetic field that is generated in the depths of the earth's center. In the last few millions of years, the natural magnetic field that protects the earth from all sort of warming and cancerous radiation has been weakening. It is a common scientific believe that the weakening of the magnetic field is a naturally occurring unreversible effect of unknown changes in the center of the earth and in the sun. My theory about this is quite the opposite. It promises full climate repair and new possibilities for you the sponsors that human kind your investors had never dreamt of.

THEORY

My theory requires testing through simple scientific research that will help determine whether it is possible to cool the climate by introducing a simple solution that allows for increasing the strength of the earth's magnetic field, which will, through the proposed solution, reflect more of the sun's ultraviolet waves, which causes the warming of the climate of the entire planet by excessive heating of free carbon compounds in the atmosphere.

The Earth has a natural magnetic field that provides a natural protection against all kinds of harmful radiation coming from space by the simple process of collision of earth's magnetic waves that reflects and refracts substantial portion of harmful cosmic waves such as Ultraviolet ABC by very strong circulation of the magnetic field between both poles, which is crucial to reflect large portion of UV and other harmful rays. Picture below graphically shows the process of magnetic field circulation that reflects and refracts cosmic rays and ultraviolet coming from the sun and the outer space in general.

The strength of the earth's magnetic field that must be very strong in order to protect us from global warming, skin cancer, wild fires, and other natural disasters sufficiently depends on four key factors:



- A. The ability of the full magnetic field flux to exit from the earth's core beneath the Arctic waters to the magnetosphere without the loss of its flux that can be measured in nano-Tesla's (nT)
- B. The ability of the full magnetic field flux to return to the earth's core beneath the Antarctic ice from the magnetosphere without the loss of its flux that can be measured in nano-Tesla's (nT)
- C. A measurable loss of the magnetic flux in the way of maximal circulation caused by the interference obstacles that reduce the strength of the outgoing and or incoming magnetic field flux present that can be measured in nano-Tesla's (nT)
- D. The field interference material type, material amount and material location that can be measured and identified using standard geological studies.

My theory assumes that in the early evolution there was no ice in the Antarctic and no Ice in the Arctic and I say that because organisms need very generous environment to be able to evolve and today's radiation is too strong for many microorganisms as the Ultraviolet radiation waves are just as big as them and they burn up in result of being exposed to them. A recent finding of the ancient marine fossils on the Mt Everest proves that earth continents its locations and elevations were long time ago something it's hard to imagine due to lack of understanding of force of magnetism on earths never stopping formation.



72

73

74 One of those forces of magnetism recently identified is the ability of magnetic field to
75 kinetically drive motion and pressure of hydrogen containing substances such as water and methane
76 gas as it was published in the Fuel and Energy Magazine under the title: Methane Hydrate Formation
77 in the Presence of Magnetic Fields: Laboratory Studies and Molecular-Dynamics Simulations.

78

79 That study proves some parts of my theory being that hydrogen compounds are driven
80 kinetically by the magnetic field meaning they move faster meaning produce more kinetic energy in
81 the presence of the magnetic field that creates an opportunity to use magnets to increase output energy
82 in the process of burning methane gas which is the benefit to you the sponsors to use that new found
83 property in the next generation of gas furnaces that use simple neodymium magnets to increase energy
84 from same amount of gas as it shown in the picture below from that study.

85

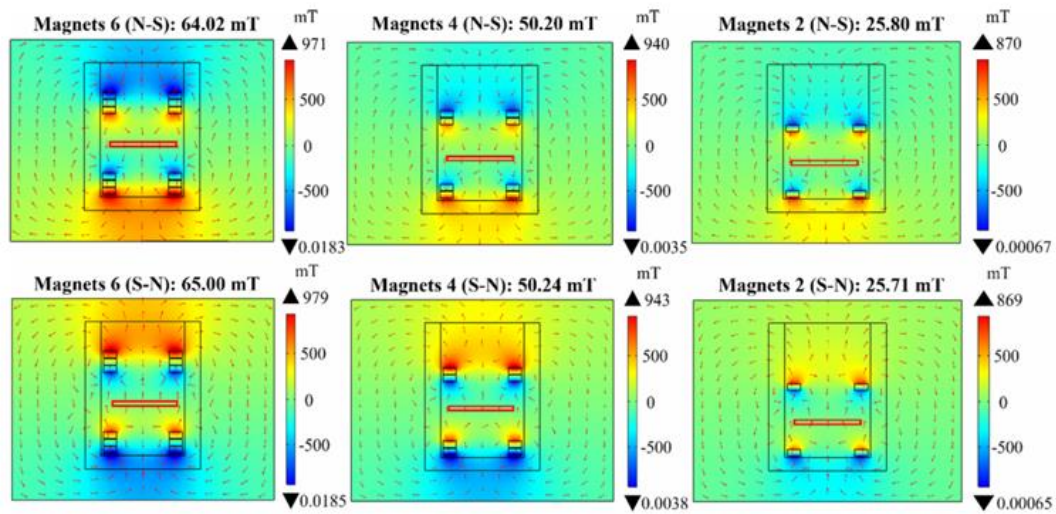
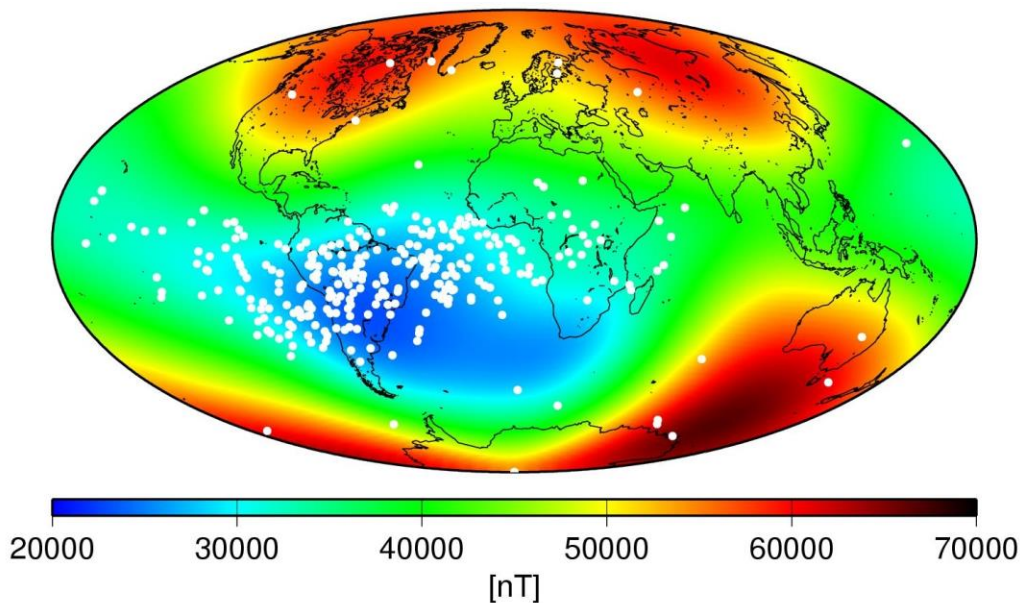


Figure 2. COMSOL-calculated contour plots of the total magnetic field intensity with red arrows indicating the field-vector direction and the color map representing field magnitude. The red rectangle demonstrates the gas–water interface area in the reactor. The black rectangles indicate the position and number of static N42 magnets applied in different configurations.

Another property that was discovered in the same study is that magnetic attracts hydrogen compounds meaning hydrogen compounds move in the direction of the magnetic field which explains a large amount of natural hydrogen based fuels and other compounds such as water in the polar regions as the magnetic field tries to return to the center of the earth but since it cannot penetrate geological structure of the Antarctic it simply builds up its volume and due lack of regular sun light in the Antarctic it becomes Ice.

The Arctic and the Antarctic are most likely very large deposits of all kinds of hydrogen compounds such as methane and other hydrogen-based fuels and due to the fact that hydrogen is kinetically driven by the magnetic field which absorbs a part of natural magnetic field coming out from the earth and going back to the earth it might have to be removed to decrease the interference that it creates for the earth's natural magnetic field ability to perform at its maximum flux that is now so low that creates large anomaly in the South American region the very opposite of the Guam Island that I also found to have the highest recorded flux out of all USGS magnetic flux measuring stations a whopping 36,997.6 nT the exact opposite what a coincidence no one notices. Current filed flux force shown in the picture below with the anomaly opposite to Guam.



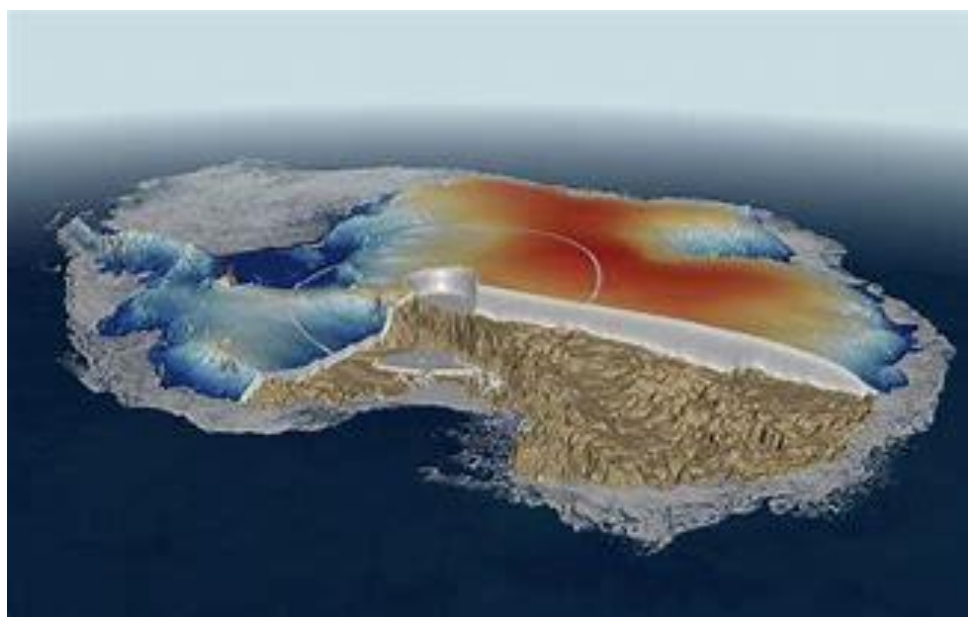
Leaving hydrogen fuels alone let's talk about the water and its properties. Water due to its natural properties, stops all kinds of radio waves:

1. The visible light waves that travel thru water are slower than those waves that travel thru air and the outer space. Light speed in air and outer space is approximately ~300,000 km/s and in the fresh water ~ approximately 225,000 km/s. In the sea water even less.
2. The radio waves of a home wi-fi router are stopped when there are cases of bottles of water or large aquariums and or biological bodies near the router antennas or in the path of wi-fi radio waves to wi-fi enabled devices as the water slows down the wi-fi radio waves just like the water stops the visible light waves causing internet protocol sessions to time out failed to deliver data and or any portion of requested data on time to your devices and from your devices to your wi-fi router.
3. The regular home microwave oven uses the previously mentioned properties of hydrogen containing compounds meaning kinetic energy increase in the presence of magnetic field and due to fact that microwaves are a form of magnetic field waves just of a different frequency and higher power example 900W in result excite kinetically water molecules



containing hydrogen that by the friction and vibration heat up any water molecules exposed to the microwave oven waves coming from the magnetron to your dish of choice.

The earth's natural magnetic field waves are blocked by the water and ice in exactly same way as the waves of a visible light and the waves of the home wi-fi router are blocked by the presence of water and other hydrogen compound and at same time cause uncontrolled release of those hydrogen compounds by the process of kinetic energy transfer from the magnetic field to those compounds in exact same way like the kinetic energy is passed on to your cold dish in the microwave oven causing premature release of the hydrogen compounds. Release of the methane is already observed in the Arctic region.



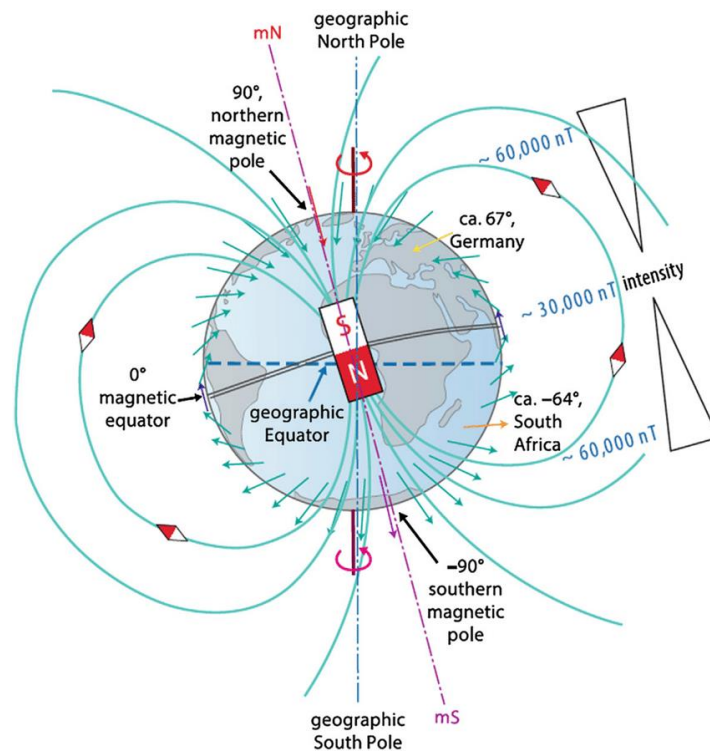
SUMMARY

Millions of years of hydrogen compounds circulation due to natural attraction to the magnetic field and darkness in the polar region have formed large ice and water deposits in the Arctic and Antarctic polar regions that now due to low magnetic field and by higher Ultraviolet radiation and the kinetic properties of hydrogen compounds to resonate hydrogen molecules cause the Arctic water, the Antarctic ice, and below contained hydrogen compounds to slowly release, but not fast enough to



reintroduce the melting ice and released CO₂ to the atmosphere that allows to redistribute melted ice and other compounds to dry land as the temperatures in the day stay too high for the water to be absorbed and all that due to one simple reason.

To low magnetic flux due to excess ice in the Antarctic region and excess water in the Arctic region that cannot reflect and refract enough of ultraviolet radiation. It is a sad cycle but basic principle like with the operation of old freezers that from time to time due to frequent opening of the doors which allows kinetically charged warm and or moist air to enter the freezer plate and after the door closes in the absence of circulation any moisture trapped can form ice and kinetic energy that is trapped can form ice from the water already contained in the freezer that eventually has to be mechanically removed with tools.



Earth's natural magnetic field waves properly classified as Extremely Low Frequency waves do are not able to penetrate water and ice thicker then 100 meters as some of the studies done by the military testing that tried to use ELF waves for submarine communication have found and have failed. This is a final critical finding that requires intervention and sponsorship that will benefit in new



162 abilities for the gas industry and possibly give access to natural resources below the Arctic and
163 Antarctic. Technology is advance enough to begin the manual repair of magnetically driven Climate
164 and benefit from it.

165
166 The last issue to consider is the current magnetic circulation of the earth. The field currently
167 leaves in the north and returns in the south. I assume that removing the appropriate amount of ice
168 from the Arctic by reducing its thickness in relation to the depth of water under the Arctic pole will
169 reverse the direction of the earth's magnetic field, providing even stronger protection against
170 ultraviolet waves, which pass through the magnetosphere and heat free carbon compounds similarly
171 to coal in tiled stoves, which heat up slowly but heat up for a long time when red-hot, which causes
172 very long and extensive drying of areas, fires, and in other regions when water does fall, it is in the
173 form of downpours, floods, and in combination with other atmospheric phenomena causes other
174 disasters, the solution of which is within the scope of measuring the magnetic force under the
175 Antarctic ice and the waters of the Arctic.

176
177 Therefore, it would be necessary to; measure the strength of the magnetic field beneath the
178 surface of the Antarctic ice, that now ranges from -1000m to 5000m; and necessary to measure the
179 strength of the magnetic field beneath the Arctic waters of depths that ranges from -800m to -2200m.
180 Those magnetic flux studies would be sufficient to calculate the area of ice and water that would need
181 to be removed to achieve the appropriate strength of the Earth's magnetic field reflecting harmful
182 amounts of ultraviolet waves through natural reflection and refraction with a stronger field resulting
183 from the thinner layer of ice/water that is an obstacle on the way from the Earth's core to the
184 magnetosphere and back to the earth's core. Resulting in cooler earth surface, better water retention
185 in soil after rain in dry areas, better UV protection due to stronger field but also from the presence of
186 the higher water content in the atmosphere as it previously mentioned it also blocks light and slows
187 it down.

188
189 The weather patterns all over the world including the icing on the poles in itself are definitely
190 due to magnetic properties of hydrogen elements and compounds such as water and methane as I
191 presented above in this writing. We have to start to study the methods of the removal of the Antarctic
192 icing as soon as possible, hopefully not by the atomic methods at all as there is no atomic weapons



yet that cause no harmful radiation, but I am not able to exclude that possibility due to lack of interest in manual ice removal and radiation free nuclear options that later might become necessary. Removal of the Ice in the Antarctic region is planets last resort to retain rest of un harm natural environments in the cooler areas of the planet before the climate becomes a daily threat to all places around the world.

CONCLUSION

Dear sponsors all funds help as I do all the research using my personal finances that come from jobs that I had to take around the world to collect all data in order to form my theory. I would love to meet to discuss large sponsorship and scientific cooperation. I will also take any donations for my current expenditures that I had to cover using a credited to me funds. I believe there is a reason somewhat sad that I was born in Lubin, the city of copper mining and after circling the globe in search for the climate and health solutions I happen to be in Katowice another mining city of coal. It might just be my good nose that rather study above the ground then underground as some of my class mates have chosen for the career for theme selves. Someday no one will have to work in coal mines and copper mines will be safer too. Let's fix the climate the right way and use the resources of Antarctic to do it while further research in kinetic properties of magnetic gases allow us to achieve more power from fewer resources.

Moving forward with the removal of the ice means climatic and environmental legislative solutions and allowances for frontier companies involved in the endeavor that will most likely generate taxes to finance the ice and resources removal that if I am correct will happen sooner or later. But later its most likely nuclear that will not bring profit nor resources to the people around the world. Help with the frost Ladies and Gentleman. All types of donations, arrangements and sponsorships are much welcome and apricated. Any grammatical and spelling errors are caused by my dysortography a condition causing to misspell feel free to report those via email.

K Pawlak

Fundator Eugenix®



REFERENCES

1. Results of ultra-low-frequency magnetic field measurements during the Guam Earthquake of 8 August 1993 Masashi Hayakawa, Ryusuke Kawate, Oleg A. Molchanov, Kiyohumi Yumoto
2. Discrimination of ULF signals from an underground seismogenic current. *Earth Planets Space* 76, 118 (2024). Pilipenko, V.A., Mazur, N.G. & Fedorov, E.N. <https://doi.org/10.1186/s40623-024-02058-9>
3. Study of Possible Correlations between Seismo-Ionospheric Anomalies of GNSS Total Electron Content and Earthquake Energy. Su Y-C, Sha J. *A Remote Sensing*. 2022; 14(5):1155. <https://doi.org/10.3390/rs14051155>
4. Kovář P, Sommer M. CubeSat Observation of the Radiation Field of the South Atlantic Anomaly. *Remote Sensing*. 2021; 13(7):1274. <https://doi.org/10.3390/rs13071274>
5. Study The Effects Of Radio Waves Propagation Under Sea At Pakistan Coastal Zones M.Waheed-uz-Zaman 1, *, M.A. K. Yousuf zail, 2 1. Institute of Space and Planetary Astrophysics University of Karachi Karachi, Sindh – 75270 Pakistan mwaheed_06@yahoo.com Cell No. 0333-2286697 2. Department of Applied Physics University of Karachi Karachi-75270, Pakistan ayubzai@yahoo.com
6. Methane Hydrate Formation in the Presence of Magnetic Fields: Laboratory Studies and Molecular-Dynamics Simulations Mengdi Pan, Bastien Radola, Omid Saremi, Christopher C. R. Allen, and Niall J. English, *Energy & Fuels* 2024 38 (24), 23497-23506 DOI: 10.1021/acs.energyfuels.4c04596
7. Golynsky, A. V., Ferraccioli, F., Hong, J. K., Golynsky, D. A., von Frese, R. R. B., Young, D. A., et al. (2018). New magnetic anomaly map of the Antarctic. *Geophysical Research Letters*, 45, 6437–6449. <https://doi.org/10.1029/2018GL078153>
8. Paxman, Guy & Jamieson, Stewart & Hochmuth, Katharina & Gohl, Karsten & Bentley, Michael & Leitchenkov, German & Ferraccioli, Fausto. (2019). Reconstructions of Antarctic topography since the Eocene–Oligocene boundary. *Palaeogeography, Palaeoclimatology, Palaeoecology*. 535. 109346. 10.1016/j.palaeo.2019.109346.
9. Technology in Focus: Underwater Electromagnetic Propagation, Re-evaluating Wireless Capabilities <https://www.hydro-international.com/content/article/underwater-electromagnetic-propagation>
10. Reception of ELF signal at antipodal distances. STAR Laboratory, Stanford University California 94305, Peter R. Bannister <https://ee.stanford.edu/~acfs/82Hz.pdf>



11. The United States Navy. Navy Fact File. Extremely Low Frequency Transmitter Site Clam Lake, Wisconsin. <https://ss.sites.mtu.edu/mhugl/2015/10/11/clam-lake-wi-elf-transmitter/>
12. CWNA® Certified Wireless Network Administrator Study Guide Exam CWNA-107 Fifth Edition David D. Coleman, CWNE #4 David A. Westcott, CWNE #7 Sybex a Wiley Brand
13. Auroras and Earthquakes: Strange Companions COMPLETED By Earthquake Hazards Program July 6, 202 USGS <https://www.usgs.gov/programs/earthquake-hazards/science/auroras-and-earthquakes-strange-companions>
14. Nothing fishy about ancient marine fossils on Everest. APP Fact Check. <https://www.aap.com.au/factcheck/nothing-fishy-about-ancient-marine-fossils-on-everest/>
15. The impact of sea-level rise on coral reef and mangrove interactions and the resulting coastal flooding hazards Pacific Island Climate and Adaptation Science Center https://pi-casc.soest.hawaii.edu/research/research-projects/slr_reef_mangrove_impacts/
16. Musa D. Abdullahi. (2021). Speed of Light Reflected from or Transmitted Through a Moving Medium: An Explanation of Fizeau's Experiment. Adv Theo Comp Phy, 4(3), 266-270.
17. Light in the Ocean and Absorption of Light. Texas A & M University, 12 Nov. 2024, <https://geo.libretexts.org/@go/page/30082>.
18. The Effects of Non-Uniform Magnetic Field on the Concentration of Methane-Air Reaction Species. Ali. Saeedi, Javad. Khadem, Hojjat. Raznahan. (2020). Journal of Magnetism, 25(1), 22-28. 10.4283/JMAG.2020.25.1.022
19. Physics of the microwave oven Michael Vollmer Physikalische Technik, Fachhochschule Brandenburg, Magdeburger Straße 50, 14770 Brandenburg, Germany E-mail: vollmer@fh-brandenburg.de https://www.academia.edu/4621788/physics_of_microwave_ovens
20. Donations to finance the expedition testing above theory can be deposited to:
Krzysztof Ireneusz Pawlak, BNP Paribas: PL 80 1600 1462 1822 1875 3000 0005
For the 2025/2026 Eugenix® Antarctic Ice and Arctic Ocean Deep Magnetic Field Measurement Expedition.